



Next Meeting

The next meeting will be held Sunday January 28 at the Qualicum and Graham Park Community Centre on Esquimalt Avenue in Graham Park, commencing at 1:30 pm (Doors open at 1:00 pm.)

The major program items will be as follows:

The annual auction which this year is being organized by Bryan Hollebhone. Bring along all the horological items you can carry - someone is sure to want them.

A talk by Jim Armstrong on 'Selling on the Internet.' This was the talk originally scheduled for the November meeting, but which had to be cancelled due to inclement weather.

There will also be the usual Mart and Display tables, which are always of great interest, and we welcome any Show and Tell items which you may wish to present.

Also don't forget that friends and visitors are always most welcome at our meetings.

Clock Repair Instruction

Consideration is being given to arranging either a clock repair course, or a series of workshops on clock repairs for Chapter members, under the auspices of Dan Hudon. However, before any firm plans can be made, it will be necessary to obtain member input.

First of all we must establish if there is sufficient interest, and if so, what form the instruction should take i.e. A complete course or individual workshops.

It is therefore intended to open discussion on this matter at the January meeting. Please come along to the meeting ready to contribute any ideas you may have and to join in the open discussion which will take place.

If you have some specific ideas and would like to discuss them prior to the meeting, either Dan Hudon at 613-820-8039, or Maynard Dokken at 613-829-1565 can be contacted.

We very much want to hear from you on this subject.

Timely Quotes

Don't waste time learning the "tricks of the trade." Instead, learn the trade. (Anonymous)

The Bytown Times is published five times a year by the Ottawa Chapter 111, National Association of Watch and Clock Collectors, 14 Kinnear Street, Ottawa, Ont., K1Y 3R4. Telephone (613) 728-1242. Maynard Dokken, President.

Bill Pullen, Vice President.

Ben Roberts, Secretary.

Charles Beddoe, Treasurer.

Immediate Past President: Dan Hudon.

Allan Symons, Program Director.

Peter Bomford, Public Relations.

Ben Roberts, Editor, Bytown Times.

Email Address: benrobe@igs.net

The Chapter meets five times a year on the fourth Sunday of the months of Jan., March, May, Sept., and Nov., at 1:00 pm. Annual dues \$16.

Membership in the NAWCC is obligatory.

Association dues: U.S. \$50.

Last meeting

The last meeting was held on Sunday November 26 at the Qualicum and Graham Park Community Centre.

Due to freezing rain on the morning of the meeting, many highways in the local area were icy, consequently only 13 members were in attendance. Because of this the advertised program for the meeting was cancelled.

However, Ernest Boldt had brought along several interesting items from his watch collection, and Gary Fox was in attendance as promised, with clocks for sale from the estate of the late Larry Beaudoin who was a member of Chapter 111 for many years. Both generated considerable interest, so that those few members who had attended found that battling the icy roads had probably been worthwhile.

In particular, an antique watch made in China which Ernest Boldt had recently acquired, was the subject of much discussion and speculation.

There was also considerable interest in the clocks Gary had brought along for sale. There were six items consisting of the following:

A Waterbury 30 hour OG in excellent restored condition, but with some parts not original.

A Pequignat 'Berlin' mantel clock.

An Atkins and Downs half column and scroll clock in excellent restored condition (Some parts including the painted glass not original.)

A French Marble mantel clock.

An Atmos clock.

A Junghans electric solenoid clock.

By the end of the meeting, four of the six clocks had been sold, and Gary's time and effort on behalf of Larry Beaudoin's widow had not been wasted.

Those in attendance agreed that we should hold our annual auction at the next meeting in January 2001, and that it should take the form of a silent auction. Bryan Hollebhone agreed to arrange details.

Again, because of the continuing inclement weather, the meeting closed earlier than usual, but everyone agreed that the afternoon had not been wasted.

Year 2001 Meeting Dates

Regular Chapter 111 meetings have been scheduled for the following dates in the year 2001:

Sunday Jan 28

Sunday Mar 25

Sunday May 27

Sunday Sept 23

Sunday Nov 25

Ailing Members.

Member Wim Vilé has been ill for some time, and is still in hospital. We extend our best wishes to Wim, and to his wife Nelly.

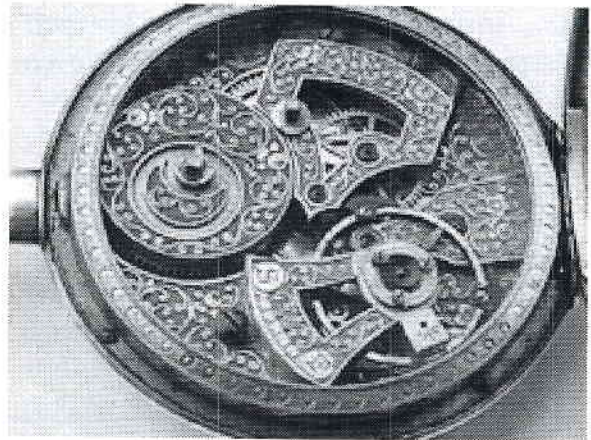
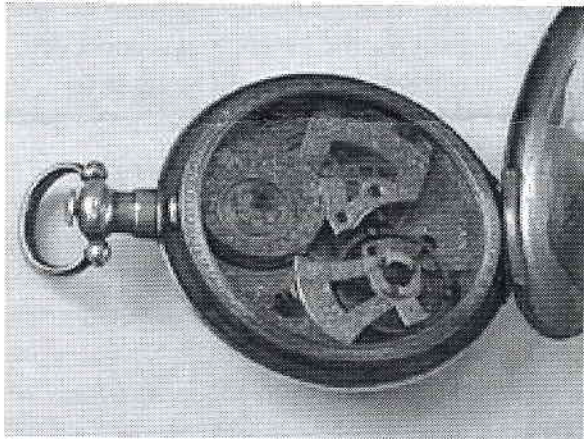
Peter Bomford is still recuperating in hospital. He would probably welcome visitors. His telephone number is 233-4041. Extension 8223. Best wishes for a speedy recovery Peter.

Seen at the Last Meeting

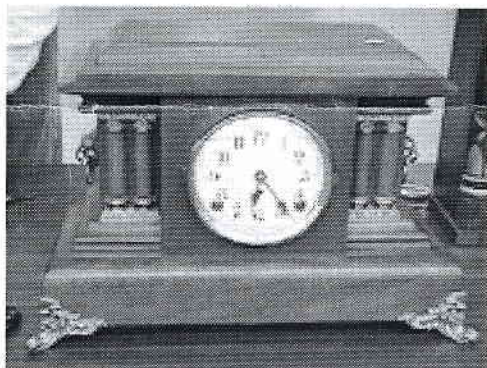
The icy road conditions prevented many of our members from attending the meeting, and the advertised program had to be cancelled. Nevertheless, those members who did attend found enough interesting items and discussion to make their attendance worthwhile.



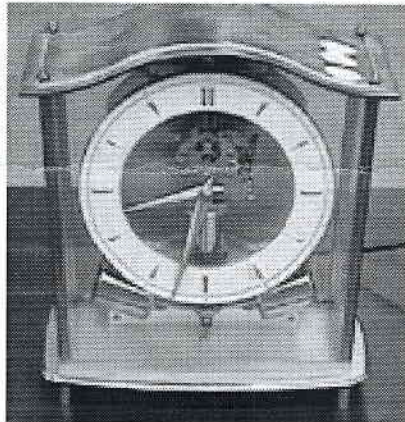
The 13 heroic and dedicated members who braved the icy road conditions to get to the meeting.



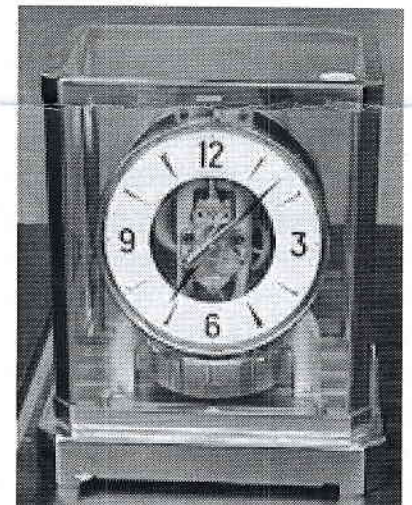
Above: The Chinese watch brought to the meeting by member Ernest Boldt, was the subject of much interest and discussion. Right: A closer view of the watch movement.



A Pequegnat 'Berlin' mantel clock priced at \$425.

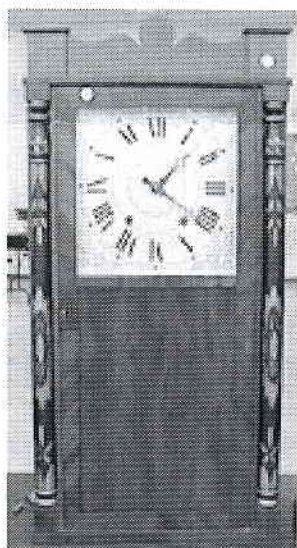


A Junghans solenoid electric clock priced at \$250.



An Atmos clock priced at \$350

Shown here are the six clocks brought to the meeting by Gary Fox. These clocks, from the estate of the late Larry Beaudoin, were being sold by Gary on behalf of Larry's widow Pearl. All the clocks were in excellent condition.



An Atkins and Downs half column and Scroll priced at \$350. (Glass not original)



A Waterbury OG (Painted glass not original) priced at \$250



A French marble mantel clock priced at \$ 300

Clocks and Watches for Sale

By Allan Symons

Don Beauprie in Deep River at (613) 584-4330 has the following clocks and watches for sale. If you are interested in any of these items, please contact Don. The list was compiled last November, but they may still be available.

Item 1.

New Haven Clock: Octagon wall clock, nice oak case, time only, running.

Item 2.

German (?) Clock: Mantel, upright hardwood case, 18" h by 11" w, no name, locking screws to hold movement in bracket, square upper and round lower glass in front door, small round glass window on each side. (movement engraved 'clock with side wings'.

Item 3.

Seth Thomas Clock/VanTassel (Brockville): 8-day column and cornice, nice label, good movement but face and weights MISSING, gold painted half columns, glass OK.

Item 4.

Waterbury Clock Case/ R.W. Patterson (Toronto): 30 Hour CASE ONLY, back off in two pieces, not much label, lower glass out (picture in fair condition).

Item 5.

Waterbury Clock: 30-hour(?) OG, 15" w by 26" h, very good label, fair-good glass, NO WEIGHTS.

Item 6.

New Haven Clock Co.: Steeple case, 22" h by 9" w, good label, T&S movement runs, cardboard face may not be original.

Item 7.

Ansonia Clock: 30-hour OG, 26" h by 15" w, strange home-made pendulum bob, cannot be original, good label, bird picture.

Item 8.

Waterbury Clock: Mantel, octagon top, 18" h by 12" w, good label (Celtic VP model) T&S movement running, dial needs paint, simulated mercury pendulum bob.

Glueing Clock Labels

Downloaded from the internet.

The enquiry:

We are clock restorers and we are searching for more advance methods of preserving deteriorating paper clock labels in antique clocks. We have extensively searched horological resources, and have found only the following information:

The most common method of preservation other than doing nothing at all, is to use a 50/50% solution of Elmer's Glue and water carefully brushed over the paper while it is in place in the clock.

This seems to be a widespread practice. We have read a very brief article about using an acrylic resin varnish that was said to be reversible (?) called Soluvar.

The reply:

Thank you for making public this unfortunate method of regluing labels by brushing on diluted Elmers glue or soluvar varnish. I do not know Elmers glue but assume

Item 9.

New Haven Clock Co. : Gingerbread style, looks like a cross between Louise and Mobile models, 14" w by 22" h, T&S movement running, special pendulum bob has a hand that moves around its dial when rating nut is adjusted. (pat. 1881).

Item 10.

Ansonia Clock: Gingerbread, part label on back (-----LEY model), seems refinished with varnish on walnut (?), T&S movement not running.

Item 13A.

Swiss Made (on face) Clock: Travel clock, 4" w by 3" h metal front, movement in ~2 1/2" diam. case on back, 8-day, luminous dial.

Item 13B.

Bucherer (on face) Watch: Wrist watch, Swiss, not working, no strap.

Item 14.

Looping (on face) Clock: Travel alarm clock, 1 3/4" diam. on small legs, 15 J, Swiss, runs but one knob is missing from the back; complete with small black leather (?) case, velvet lined.

Item 15.

Waltham Watch: Pocket watch, ~2" diam. ,1-12 and 5-60 numbers on dial, movement engraved P.S.(?) Bartlett, 17 jewel, gold case with locomotive engraved on back.

Item 16.

Watch (Maker unknown): ~3/4" round, gold-filled case, bracelet; name C.A. Wainman on face, "Cashier" trade mark.

Item 17.

Waltham Watch: Ladies round pocket watch, 1.5" daim., cracked crystal, gold filled case (American Watch Case Co. Toronto)

Item 18.

French Clock: Black Marble, approx 8" w by 5" deep, Japy Frere movement, shallow round metal dish suspended above top.

it to be a PVA type adhesive. At any rate brushing any type of glue or varnish 'on top' of things like labels in a bid to consolidate them is very bad practice and will do more to ultimately destroy the labels than preserve them. Discoloration is one result, others are differing expansion/contraction rates of glue or varnish on the usually fragile paper causing damage, embrittlement etc, readhesion of the paper to the clock case is likely to be temporary or incomplete as the glue or varnish penetrates unevenly, reversibility is at least severely compromised and so forth.

The correct way to reattach loose fragments of a paper label in these cases is to use a weak solution of a conservation quality methyl cellulose size, carefully applied to the undersides of insecure areas with a small brush to reglue those bits that need reattaching, being careful not to spread the adhesive onto surrounding surfaces. Detlef Klein, Conservator of Objects and Furniture.

Detlef Klein Conservator The Science Centre & Manawatu Museum Private Bag 11055 Palmerston North, New Zealand.

The Canadian Oyster

The following was downloaded from the Internet. It was posted by Steven Oltuski, Northern Time Inc., 238 Davenport Rd., Suite 292 Toronto, M5R 1J6. E-Mail vintagewatch@northern.time.com It is reproduced here with his permission.

Once this critter could be heard ticking in great numbers from the wilds of British Columbia to the shores of Newfoundland. Now it is definitely an endangered species.

This rare and sought after Rolex *Oyster* is often misunderstood and undervalued. Watch dealers and collectors in Canada are of course quite familiar with it. Even the first vintage watch stores of Los Angeles, such as "Wanna Buy A Watch" and "Second Time Around" have been selling them successfully to customers from the Pacific Rim for years.

Yet when "experts" open the back of the watch there are puzzled looks and "where is the Rolex signature on the movement?" exclamations. Actually they are signed "Rolex Geneva", its just that the *signature* is on the top plate under the dial of the watch. The movement is actually a 3rd party Swiss ebauche movement-Font 30-that Rolex had modified and upgraded its hairspring to high specifications, for their use. Although there is no one left at Rolex who knows or cares much about these models, some of their ex-technicians here, say that it was purely a matter of economics. These popular little 3/4 size waterproof watches were *selling* for between \$35 and \$50 in 1943. It seems they were only around from about 1939 to 1948.

The movements, called *Rolex 59s*, were used for a variety of Oyster and non-Oyster Canadian Rolex models. The cases were also specifically produced for these models and were not just left over 3/4 size

cases with these movements thrown in, as had previously been thought by other Rolex researchers. Rolex in Canada was a separate company and had a high degree of autonomy in terms of marketing alternative models not seen anywhere else in the world. This has been a boon for Rolex collectors who already have most of the Geneva based models.

These Oyster models had a variety of names and dial configurations; Oyster Raleigh, Commander, Junior Sport, Explorer, Centregraph, Lipton, Lincoln, Grenfell, Shipmate, and Solar Aqua. The most attractive models had very technical or military dial styles that included radium numerals and 24hr. tracks. Rolex Canada considered them in equal esteem to other models, as they were included in their official Rolex brochures at the time. They were marketed by prestige jewelry stores as well as Canada's largest department store, Eatons, which still exists. Eatons often sold them under the name of Solar Aqua or just Solar. They were apparently introduced into the U.S. market in limited numbers in the Portland, Oregon area. These watches were popular college graduation gifts as well as seeing action on the beaches of Normandy during WWII. They came in steel, steel and gold filled bezels, and gold-filled cases. The steel cases are the most popular as they are less a victim of wear and corrosion than the gold-filled models are.

They have a hidden advantage for the current Rolex collector. As Rolex no longer sells or distributes obsolete parts, it will get harder to service Rolex produced movements. Since the Canadian Oyster uses a common Swiss ebauche as the basic movement, many parts are interchangeable and still available to the local watchmaker. This has made it a very practical as well as interesting Rolex to collect.

Please Note that this system is close, but still an approximation.

Rolex Oyster Case Dating System

Serial No.	Year	Serial No.	Year	Serial No.	Year	Serial No.	Year
20001	1926	529163	1947	1259699	II 1965	8614000	1985
21691	1927	628840	1948	1871000	1966	9290000	1986
23969	1928	710776	1951	2163900	1967	9766000	1987
24747	1928	840396	1952	2426800	1968	9999999	1987
28290	1930	929426	IV 1953	2689700	1969	R000000	1987
29312	1932	930879	I 1953	2952600	1970	R999999	1988
29933	1933	937170	I 1954	3215500	1971	L000000	1988
31310	1934	941699	I 1953	3478400	1972	L999999	1990
35365	1935	952892	I 1954	3741300	1973	E000000	1990
37596	1936	955466	IV 1953	4004200	1974	E999999	1991
40920	1937	964789	IV 1953	4267100	1975	X000001	1991
43739	1938	973697	IV 1953	4538000	1976	N000001	Nov 1991
71224	1939	973930	III 1953	5008000	1977	C000001	1992
99775	1940	116578	IV 1953	5482000	1978	S000001	1993
106047	1941	132562	III 1953	5958000	1979	W000001	1994/5
143509	1942	139477	I 1956	6434000	1980	T000001	1996
230878	1943	282632	III 1955	6910000	1981		
269561	1944	383893	I 1958	7386000	1982		
302459	1945	385893	II 1958	7862000	1983		
387216	1946	412128	IV 1958	8338000	1984		